



## Stocksbridge Nursery Infant School

Pot House Lane, Stocksbridge, Sheffield, S36 1EJ. Tel: 0114 2883109

E-mail: [enquiries@stocksbridge-nur.sheffield.sch.uk](mailto:enquiries@stocksbridge-nur.sheffield.sch.uk)

Website: <https://www.stocksbridgenurseryinfants.co.uk/>

Newsletter: [newsletter@stocksbridge-nur.sheffield.sch.uk](mailto:newsletter@stocksbridge-nur.sheffield.sch.uk)

Noticeboard: [www.stocksbridgenurseryinfants.co.uk/noticeboard/](http://www.stocksbridgenurseryinfants.co.uk/noticeboard/)

Facebook: [www.facebook.com/stocksbridgeni](http://www.facebook.com/stocksbridgeni)

### What's happening in school next week?

- Miss Kane is teaching class 8 on Monday afternoon.
- Dance club with Jade on Monday 3:00 – 4:00pm.
- Sewing club with Miss Spencer on Monday 3:00 – 4:00pm.
- Mrs Townsend is not in school on Tuesday.
- Miss Kane is teaching class 5 on Tuesday afternoon.
- Gymnastic club with Miss Price on Tuesday 3:00 – 4:00pm.
- Mrs Taylor is teaching Nursery on Wednesday.
- Miss Kane is teaching the Orchard children on Wednesday morning. Mrs Veale is supporting in Class 8.
- **The school photographer will be in school on Wednesday 8th October. Please bring your best smiles to school, clean jumpers and tidy hair dos!**
- Football club with Lee on Wednesday 3:00 – 4:00pm.
- Mrs Townsend is available to show parents around on Thursday at 9.15am.
- Miss Kane is teaching class 3 on Thursday afternoon.
- Multisport club with Jade on Thursday 3:00 – 4:00pm.
- Mrs Townsend is not in school on Friday.
- Miss Spencer is teaching class 5 on Friday morning and class 7 in the afternoon.
- Miss Kane is teaching the Orchard on Friday afternoon.
- Arts & Crafts club AND Gardening club on Friday 3:00 – 4:00pm.

### Celebrating 100% attendance each week.

The lucky winners this week were Charlie Cawthorne, George Barrott-Young and Harry Ward.

### Attendance

Our target is 96%. This week's attendance is 96.6%. Great!

Class 3: 94%

The Orchard: 100%

Class 5: 98%

Class 6: 92%

Class 7: 98%

Class 8: 98%

### Well done The Orchard & Classes 5,7, & 8.

### Punctuality

Our doors open at 8.20am and learning starts at 8.30am. Our Phonics teaching begins at 8.45am each day. We have too many children coming late each day. Here's the number of children late this week.

Monday: 1

Tuesday: 0

Wednesday: 2

Thursday: 2

Friday: 2

Total: 7

This calls for a celebration.  
Thank you everyone.

### Looking ahead to the 13<sup>th</sup> October 2025.

- The assembly theme will be 'Harvest, poverty'.
- This week is cycle to school week.
- Miss Kane is teaching class 8 on Monday afternoon.
- Dance club with Jade on Monday 3:00 – 4:00pm.
- Sewing club with Miss Spencer on Monday 3:00 – 4:00pm.
- Miss Kane is teaching class 5 on Tuesday afternoon.
- Gymnastic club with Miss Price on Tuesday 3:00 – 4:00pm.
- KS1 (Y1 and Y2) Ball Skills Festival at SHS 3.45pm.
- Mrs Taylor is teaching Nursery on Wednesday.
- Reading and phonics session for reception parents (or anyone who wants to come along) on Wednesday at 2pm. It will be in Class 1.
- Football club with Lee on Wednesday 3:00 – 4:00pm.
- Deb Cockayne (from the Christian Centre) is coming to take our assembly on Thursday 16<sup>th</sup> October.
- Miss Kane is teaching class 3 on Thursday afternoon.
- Multisport club with Jade on Thursday 3:00 – 4:00pm.
- Miss Spencer is teaching class 5 on Friday morning and class 7 in the afternoon.
- Miss Kane is teaching the Orchard on Friday afternoon.
- Arts & Crafts club AND Gardening club on Friday 3:00 – 4:00pm.

### After school clubs – starting w/c 08/09/2025 for Y1 and Y2.

Mondays – Dance Club – still spaces available AND Sewing Club - FULL – 3.00-4.00pm.

Tuesdays – Gymnastics Club – 3.00-4.00pm. Still spaces available.

Wednesdays – Football Club – 3.00-4.00pm. FULL.

Thursdays – Multisport Club – 3.00-4.00pm. Still spaces available.

Fridays – Arts & crafts club – a few spaces left AND Gardening club – a few spaces left – 3.00-4.00pm.

All our clubs are on a first come first served basis. If any clubs are unavailable, please contact the school office and your child can be added to a reserves list.

**Tweak of the Week:** Be kind to each other, share and say kind things.

## School Menu Spring/Summer 2025 (All school including Nursery)

Week 2	Monday	Tuesday	Wednesday	Thursday	Friday
Main course	Pork sausage roll & home baked potato wedges	Beef pasta Bolognese & garlic bread	Roast chicken with gravy, Yorkshire pudding & roast potatoes	Wholemeal margherita pizza & rice salad	Fish fingers & chips
Vegetarian main course	Macaroni cheese	Plant-based pasta Bolognese & garlic bread vg	Quorn grill, gravy, Yorkshire pudding & roast potatoes	Cheesy bean pitta	Cheese & onion pasty roll with chips
Jacket potato and filling	Jacket potato with cheese or baked beans	Jacket potato with cheese, baked beans or tuna mayo	Jacket potato with cheese, baked beans or tuna mayo	Jacket potato with cheese, baked beans or tuna mayo	Jacket potato with cheese, baked beans or tuna mayo
Sandwich option	Ham	Ham	Ham	Ham	Ham
	Tuna mayo	Tuna mayo	Tuna mayo	Tuna mayo	Tuna mayo
	Cheese	Cheese	Cheese	Cheese	Cheese
Vegetables	Garden peas, baked beans	Broccoli, cauliflower & carrots	Broccoli, carrots & sweetcorn	Garden peas or sliced carrots	Garden peas, baked beans
Dessert	Vanilla sponge vg & custard	Shortbread & orange slices vg	Chocolate Brownie	Flapjack vg	Chocolate oatly slice vg

Yoghurt and fruit are also available each day as an alternative to dessert along with a selection of breads, salads and fresh drinking water.

**Lunchboxes** (All school inc Nursery) Could we please ask that children bring healthy lunches from home if they are not having a school meal. It is fine for the children to bring a cake bar, a biscuit etc. for dessert but please do not send chocolate or sweets. Thank you.

## After School Clubs (Year 1 and Year 2).

If your child is attending an after-school club, please send them with a snack and drink which they can have before the club starts. Some of the children are **very** hungry by the end of the club.

## Phonics, Keyword and Reading at home.

The children will begin their daily phonics lessons in class next week. We use Monster Phonics. Information about the scheme can be found on our website. Each week we'll let you know what sounds (phonemes) the children will be learning and which keywords (sometimes called Common Exception Words or High Frequency Words) they need to have learnt to read and in Year One and Two to spell by the end of the week.

It's really important that the children practise at home so that they keep up.

Autumn 1 Week 4	Reception	Year One	Year Two
<b>Sounds/Phonemes</b>	o c k ck	Suffix s/es a-e	le el il
<b>Keywords</b>	to into go no the	House our where were they says are ask put push pull full	Any many pretty move prove improve



## Growing Wild @ SNIS



Our compost champions have been doing a great job around school, helping to turn some of their classroom food waste into compost for our garden. We're using a bokashi in, which ferments the waste before it is added to the compost bin. This has several benefits including:

- Speeding up the composting process (in the right conditions compost can be ready within 12 weeks, rather than hanging around for months.
- Fermented food waste is much less appealing to pests, hopefully making our compost area a much more pleasant space.
- The liquid created during the fermentation process can be used as a fertilizer, to give the plants in our garden a welcome boost OR it also makes rather good drain cleaner (the enzymes in it eat the bacteria that make drains smelly!)
- This bin is now full, so we will keep it sealed for a couple of weeks while the bokashi activator bran does its magic and then we can add it to our compost bins, which our busy gardeners helped to clear a couple of weeks ago.

**Tweak of the Week:** Be kind to each other, share and say kind things.

# Word of the Week



daring



## Meaning

- Ready to take risks, someone who isn't afraid to do something brave, try something new or a little scary.



## Challenge

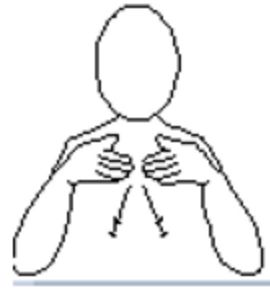
Would you try any of these daring things when you're older?

**CELEBRATING WORDS**

## Makaton – Signs of the Week



teacher



clothes

See if being signed here.

[Teacher](#)

[Clothes](#)

### Supporting Reading at Home

Practise those high frequency words, tricky words, common exception words. There are lots of names for the same words. These are just words you need to know – on sight – without sounding them out. They either don't sound out like 'the', or they appear so often in our language that it is better to just know them – words such as on, it, and, like, home, children etc. Children who have a poor sight vocabulary in that they can't just read the words and rely on sounding out, struggle to become fluent readers. Without fluency in our reading, it is harder to understand and comprehend what we've read.

Teachers are sending home the keywords your child needs to keep up with their reading. Here are some online games your child can play to practice.

[Tricky words | Phase 3 Phonics | Phonics song - BBC Bitesize](#)

[The Dinosaur's Eggs - High Frequency - Sight Words](#)

[Foundations Level 1 Unit 4-6 Trick Words Match - Matching pairs](#)

Alternatively, choose 10 keywords from your child's reading book. Write them on pieces of paper twice so you have two sets. Turn them over and find matching pairs. Your child can only keep the words if they can read them.

**Tweak of the Week:** Be kind to each other, share and say kind things.



# What Parents & Educators Need to Know about EA SPORTS FC 26

AGE RESTRICTION  
PEGI  
3

## WHAT ARE THE RISKS?

### AN ANNUAL RELEASE SCHEDULE

As was the case with the last two EA Sports FC games and the FIFA series, before it, the franchise rolls out once a year with updated squads and new features. This can make it expensive to keep up with, particularly when so many dedicated players are keen to get their hands on the latest edition.

### VOICE CHAT

Voice chat can be enabled across all platforms, meaning young people can speak to anyone they play with or against. While it can be switched off, some children will no doubt want to speak to their friends while they play. This also means they may encounter strangers much older than them, which can expose them to inappropriate language or behaviours.

### IN-GAME PURCHASES THROUGH ULTIMATE TEAM

Ultimate Team is the big draw for EA Sports FC, letting players spend real money on packs that they can open to build a squad of the world's best players. They're not always easy to obtain, and new, improved versions of players will be regularly added as limited-time offerings. Young people could feel pressured into spending money and experience fear of missing out.

### SCAMMERS IN ULTIMATE TEAM

Ultimate Team is managed by EA itself, but that hasn't stopped scammers from looking to dupe players out of money and in-game coins. Some scammers sell their accounts, which is a violation of EA's terms of service, while others will 'sell' coins - something the developer is still working to crack down on. Some try to gain access to others' accounts, potentially giving them access to payment information.

### POTENTIAL FOR ADDICTION

While EA Sports FC is potentially addictive, thanks to its fast-paced gameplay and mirroring of the real-world skill and glamour of football, Ultimate Team's focus on limited-time rewards and the lottery of winning packs can make it feel closer to gambling than gaming, which may lead to addiction and impulsive spending of money.

## Advice for Parents & Educators

### PREPARE FOR ANOTHER GAME IN A YEAR

The annual-release cadence aligns with the return of the school year, and can be a great way to incentivise good behaviour at the start of terms. If children are applying themselves and preparing for a new year of school, or were particularly well behaved in the summer, EA Sports FC 26 could make a great reward.

### LIMIT SPENDING

If you're worried about children accidentally spending real money in Ultimate Team, whether in game or on the EA Sports FC companion app, don't link a payment card to their account. Reclaiming funds can be a mountain to climb, and the dopamine hit of opening flashy packs with slick animations means one purchase can lead to another very quickly. It's also worth adding a prepaid card if you'd prefer them to make their own choices with their budget.

### MONITOR VOICE CHAT

As in-game chat is open, be sure to adjust the settings in EA Sports FC 26 to lock it down. If children want to chat with their friends while they play, consider setting up a safe space for them to call, to allow them to play without fear of outsiders.

### BE VIGILANT

As with last year, there are ways to keep scammers at bay. Ensure passwords are locked down, and consider using a password manager application to keep them secure. EA will never contact players through the game itself, so be vigilant with incoming messages, and block and report suspected spam. EA will contact players by email if needed, but they will never ask for usernames or passwords. Players should also avoid buying in-game currency from unofficial websites - doing so can lead to accounts being banned and could cost players money in the process.

### Meet Our Expert

Lloyd Coombes is an experienced freelance writer and has been working in the gaming and tech industry for seven years. A regular visitor to the App Store to try out new tools, he's also a parent and therefore understands the importance of online safety. He's also a tech and fitness writer and has been published at sites including iDn, TechRadar, and plenty more.



The National College

Source: See full reference list on guide page at: <https://nationalcollege.com/guides/ea-sports-fc-26>

@wake\_up\_weds

/www.thenationalcollege

@wake.up.wednesday

@wake.up.weds

Users of this guide do so at their own discretion. No liability is entered into. Current as of the date of release: 01.10.2025

## Community Warming Project

Could you benefit from free home energy efficiency and saving measures? With winter on the way our Community Warming Project could be just what many households need.

They offer the following simple insulation and energy efficiency measures to households: - door curtains, door sausages, draught excluding tape, radiator reflectors, pipe lagging, LED bulbs.

So far, we have worked with more than 50 local householders including families, disabled, and elderly people. This service is provided free of charge to eligible households (a simple personal circumstance check we carry out in complete confidence) and all work is carried out by professional handy people.

If you'd like a chat about what UDCE can do please contact Rob to coordinate a meeting with Pete Riley, director at Upper Don Community Energy.

You can also find details about the project here: <https://www.udcommunityenergy.co.uk/cwp.html>

## Macmillan

Once again, thank you for all the buns, biscuits and treats for Macmillan day last week. We managed to raise an amazing £205.50. Thank you for all your kind donations.

**MACMILLAN**  
**CANCER SUPPORT**

**Tweak of the Week:** Be kind to each other, share and say kind things.



Parents/Carers,

The School Nursing team from the Sheffield Children's Hospital will attend school to carry out the height and weight screening, as part of the National Child Measurement Programme (NCMP), and the hearing screening, during this academic year.

In addition, the Vision team from the Sheffield Children's Hospital will attend school to carry out the vision check.

If you would like support or to discuss your child's health, i.e. eating, sleeping, toileting issues, etc., please copy the link below to complete the "Ready for School" questionnaire.

<https://www.sheffield.childscreening.co.uk/Forms/SHQ>

Please complete the questionnaire **before 16th October 2025.**

Your unique school code for Stocksbridge Nursery and Infant School is SF149119

If you wish to opt out of this screening then please send an email to [scn-tr.ncmpoptout@nhs.net](mailto:scn-tr.ncmpoptout@nhs.net) **before 16th October 2025.**

Please include in your email the following details:

- Name of child who you are opting out for
- Date of birth of the child
- School the child attends
- Which screening you are opting out of

For more information about the program please visit website:

<https://www.sheffieldchildrens.nhs.uk/services/school-nursing/school-entry-health-screening/> or call

Admin: 0114 3053224 (option 4)

## Seasonal Flu Vaccine

Please remember to fill in your consent form for the seasonal flu nasal vaccine that will be given in school in November. An email was sent last week with instructions on how to complete the consent form.

Thank you.

## Is my child well enough to go to school today?

The South Yorkshire and Bassetlaw Healthier Together website has some really helpful information for families on general health and well-being. In particular, it provides information about common childhood illnesses and whether children can still attend school or not. You can access this information [here](#).

If your child is unable to attend school due to illness you should, when possible, inform school of their absence by 8.30am in the morning. You can do this by using the [Studybugs](#) app or by leaving a message on our dedicated answer phone service by phoning 0114 2883109 and selecting option 1.

If your child has a medical appointment during school hours please let the school office know in advance. Our office staff will ask you to provide evidence of the appointment, so that your child's absence can be authorised.

In the case of sickness and diarrhea, we ask that children stay off school for 48 hours after the last incident. Thank you.

## Attendance at School

I just wanted to remind parents re the systems and procedures we have in school to monitor and support great attendance at school.

Tracy Marshall monitors the attendance of children each day and makes calls to parents and carers when we are unsure about a child's absence. We do this for safeguarding reasons – to make sure they and their families are OK.

Each month myself, Carly Redgate and Tracy monitor the attendance of all children. We focus on attendance below 90% as this is considered as persistently absent. We know children become ill and, in these cases, we aren't worried, for example if they have had a period of illness. Should we have any queries we will get in touch with you usually in the form of an initial letter home but we may give you a ring or catch you when on gate duty.

Should your child's attendance continue to be low the following month we will get in touch once again and begin to monitor their attendance more closely. At this point we may set a target and a time period in which we hope that their attendance improves.

If, for whatever reason, attendance continues to remain low, we will make contact and arrange to meet with you to see what we can do, working together, to help improve things.

Should we not be able to make progress, we may seek the support of our Local Authority Attendance Officer, Janet Kozler.

I am pleased to type that attendance this year is better than it has been for a long time. We know that children become ill, particularly our young children who are around different bugs and germs. We know children have medical appointments. We know that sometimes they have hospital stays. The children and families we want to help, and who do cause us some worry, are those where patterns of absences are regular or where children have specific days off on a regular basis for example.

The 100% attendance wheel each Friday in assembly is popular. Next week we are going to start one for staff too but the prizes in that box will be slightly different to that for the children!

## Mrs Townsend's Pupils of the Week

**Henry Smith.** Henry Smith is one of the kindest most considerate children you could wish to meet. He has impeccable manners and social skills beyond his years. Henry looks out for other people – children and adults. We are very lucky to have Henry Smith in our school. He's a treasure!

## Nursery News

We have had a conker-tastic week, rolling, tipping, pouring and even mixing colours as they wound their way down the drain pipes.

As the weather is starting to turn cooler and colder we are encouraging the children to put on their own coats. It's great to see the children helping each other out, but any extra practise at home would be a big help please.

## Star of the Week

**Liliana Shepherd** breezes through the Nursery door each morning like a breath of fresh air. She is bright, bubbly, cheery and up for anything. We love her positivity - it's infectious.

## Get ready for Photography Day on

**Wednesday 08/10/2025**  
at Stocksbridge Nursery Infant School

Look out for the order form  
coming home with your child



[www.schoolphotographs.co.uk](http://www.schoolphotographs.co.uk)



**Assembly Theme: Fairness/Sukkot**



### This week's praise board



- Rosie Wainwright has worked very hard this week.
- Riley Freestone is an all-round superstar with great answers at group times.
- Amelia is working so hard, we are really proud of her.
- Harry Ward did a brilliant job completing all his morning tray tasks.
- Lucian has been using wonderful vocabulary and giving very perceptive answers in maths.
- Lyssie Redwood-Peace, Ted Guy and Tilly Anderson just get on with things without a fuss.
- Ben Graham made a point of saying thank you for the crackers.
- Oscar Ryan has been an absolute superstar this week finishing his activities.
- Freya Morgan did some excellent work in RE this week. She really impressed me with her answers during class discussion.
- This week, Remi Guy has shown how true determination and hard work can really pay off. Well done Remi, you've worked so hard.
- Darcie Simmons is just really kind. You have been spotted helping your friends.
- Iris Burnham- Wake is always so welcoming with a hello and a wonderful big smile.
- Charlie Christian did a great job using his phonics to write 3 sentences.
- Reuben Kimpton has worked so hard this week in English. He has really tried hard to use interesting adjectives in his writing.
- Thankyou Riley Fleetwood for being such a kind friend in Art club last week.
- Teddy Black could recall many facts in our science lesson this week. He knew what the longest bone was and could remember how many ribs we have.
- Dakota Rodgers is working hard on remembering finger spaces in her writing. Well done Dakota!
- Billie-Mae McGuffie did some fantastic artwork this week. Her drawings are always beautiful and detailed.
- Phoebe Merryman-Fletcher has been sharing her toys and setting a good example for others.
- Oliver Lodge has been following instructions at small group time.
- Thank you to Charlie and Freddie Christian for sharing some of their conkers with Class 6.



**Tweak of the Week:** Be kind to each other, share and say kind things.



## **Important information regarding the school crossing patrol – please read!**

As we quickly advance into winter and it starts to get darker and the weather is more unpredictable – it is important we remain vigilant in keeping our families safe.

### **When children arrive at the crossing point:**

- The Patrol will tell them to wait on the pavement and use the Stop sign as a barrier to prevent them from edging forward, until they are called across.
- The Patrol will use the Stop sign to instruct traffic to stop. The Patrol may need to wait for a safe gap in the traffic. **DO NOT FOLLOW THE PATROL INTO THE ROAD!**
- When the traffic has stopped the Patrol will call you to cross over. PLEASE WAIT UNTIL IT IS SAFE TO CROSS. Please walk in front of the Patrol so he or she can see you.
- The Patrol will remain in the center of the road until all the children and adults have completed crossing the road.

### **For drivers:**

When approaching a school, you should reduce your speed and be prepared to stop, also be patient and considerate. School Crossing Patrols need to see and be seen! It can be difficult to see children on the pavement, especially if there are parked cars by the school. Children may run into the road without thinking about traffic.

### **Please remember:**

- By law you **MUST** stop when signaled to do so by a Patrol displaying a Stop sign.
- School Crossing Patrols can stop traffic to cross any pedestrian, adult or child.
- Do not move forward and remain patient.
- Do not park close to where a Patrol is working and **NEVER** on the zigzag markings.
- Look out for signs or flashing amber lights which warn of a School Crossing Patrol ahead.
- Park with courtesy and consideration to others, observing all parking regulations in accordance with the Highway Code and in such a way that our children are able to enter and leave the school safely.

**It is an offence under the Road Traffic Regulations Act 1984 if you do not stop when signaled to do so by a School Crossing Patrol. If you do not stop the possible penalties include:**

A fine of up to £1,000

3 Penalty Points


Disqualification



# STOCKSBRIDGE RUFC JUNIORS RUGBY UNION TRAINING

**Every  
Wednesday**

**5.30-6.30pm**

 **Coal pit lane-  
S36 1AW**

**GIRLS AND BOYS WELCOME**

*Starting 24th September 2025*



*Stocksbridge Rugby*

@stocksbridge\_rugby



**Tweak of the Week:** Be kind to each other, share and say kind things.

Events

# INDOOR Table Top SALE 2025

**Sunday 12th October**  
**10am - 1pm** (Stalls set up from 9:00am)

**Free entry and car parking**

For further information, including stall prices, or to book a table: please visit our website or contact the Centre

By phone: 0114 288 3792

Or email: [admin@stocksbridgeclc.co.uk](mailto:admin@stocksbridgeclc.co.uk)

**Food and drinks**  
**available all day from**



**Stocksbridge  
Community  
Leisure Centre**

Moorland Drive  
Stocksbridge  
Sheffield, S36 1EG

[www.stocksbridgeclc.co.uk](http://www.stocksbridgeclc.co.uk)

0114 288 3792

@stocksbridgeclc

Charity Number 1153527

**Assembly Theme:** Fairness/Sukkot



MUSIC IN  
THE ROUND



SHEFFIELD  
THEATRES

FAMILY CONCERT  
**THE STORM WHALE**

Saturday 11 October

10.30am – 11.30am & 1.30pm – 2.30pm

Crucible Theatre, Sheffield

PERFECT FOR  
**3-7**  
YEAR-OLDS



**Tweak of the Week:** Be kind to each other, share and say kind things.